

Special educational needs and disabilities (SEND) policy

Newfield Primary School



Approved by:	Governing Board	Date: October 2024
Last reviewed on:	October 2023	
Next review due by:	October 2025	

Contents

1. Aims and objectives.....	3
2. Vision and values.....	3
3. Legislation and guidance.....	4
4. Inclusion and equal opportunities	4
5. Definitions	4
6. Roles and responsibilities	6
7. SEND information report.....	9
8. Our approach to SEND support.....	9
9. Expertise and training of staff	15
10. Links with external professional agencies	15
11. Admission and accessibility arrangements	16
12. Complaints about SEND provision	17
13. Monitoring and evaluation arrangements	17
14. Links with other policies and documents	17
15. Glossary.....	18

1. Aims and objectives

Our special educational needs and disabilities (SEND) policy aims to:

- Make sure our school fully implements national legislation and guidance regarding pupils with SEND
- Set out how our school will:
 - Support and make provision for pupils with special educational needs and disabilities
 - Provide pupils with SEND access to all aspects of school life so they can engage in the activities of the school alongside pupils who do not have SEND
 - Help pupils with SEND fulfil their aspirations and achieve their best
 - Help pupils with SEND become confident individuals living fulfilling lives
 - Communicate with pupils with SEND and their parents or carers and involve them in discussions and decisions about support and provision for the pupil
- Explain the roles and responsibilities of everyone involved in providing for pupils with SEND
- Communicate with, and involve, pupils with SEND and their parents or carers in discussions and decisions about support and provision for the pupil
- Make sure the SEND policy is understood and implemented consistently by all staff

2. Vision and values

Our Vision

- ❖ To nurture **AMBITION** in our children by ensuring that all pupils have a sense of **BELONGING** in a learning community where they are empowered to **ACHIEVE the very best that they can**.
- ❖ For staff, pupils, parents, governors and the community to show **RESPECT** for each other. We aim to be a cohesive school knitted together with **KINDNESS**.
- ❖ To provide an engaging, stimulating and challenging curriculum to overcome barriers to learning so that all pupils can experience **ENJOYMENT** and **RESILIENCE** for life-long learning.
- ❖ To create a culture of **TOLERANCE** where the beliefs, thoughts and ideas of all members of the school community are respected.

School Values

We uphold and promote British values through our core school values of:

Achievement

Ambition

Belonging

Enjoyment

Kindness

Resilience

Respect

Tolerance

We expect all members of our community to embody the ethos of the school built around our vision and core values. We are committed to making sure all our pupils have the chance to thrive and supporting them to meet their full potential. We are focused on creating an inclusive environment, where provision is tailored to the needs and abilities of pupils, no matter how varied.

At our school we will provide all pupils with access to a broad and balanced curriculum.

3. Legislation and guidance

This is based on the statutory [Special Educational Needs and Disability \(SEND\) Code of Practice](#) and the following legislation:

- [Part 3 of the Children and Families Act 2014](#), which sets out schools' responsibilities for pupils with SEND
- [The Special Educational Needs and Disability Regulations 2014](#), which set out local authorities' and schools' responsibilities for education, health and care (EHC) plans, SEND co-ordinators (SENDCOs) and the special educational needs (SEN) information report
- The [Equality Act 2010](#) (section 20), which sets out the school's duties to make reasonable adjustments for pupils with disabilities
- The [Public Sector Equality Duty](#) (section 149 of the Equality Act 2010), which set out the school's responsibilities to eliminate discrimination, harassment and victimisation; and advance equality of opportunity and foster good relations between people who share a protected characteristic (which includes having a disability) and those who don't share it
- The [Governance Handbook](#), which sets out governors' responsibilities for pupils with SEND
- The [School Admissions Code](#), which sets out the school's obligation to admit all pupils whose education, health and care (EHC) plan names the school, and its duty not to disadvantage unfairly children with a disability or with special educational needs

4. Inclusion and equal opportunities

At our school we strive to create an inclusive teaching environment that offers all pupils, no matter their needs and abilities, a broad, balanced and challenging curriculum. We are committed to offering all pupils the chance to thrive and fulfil their aspirations.

We will achieve this by making reasonable adjustments to teaching, the curriculum and the school environment to make sure that pupils with SEND are included in all aspects of school life.

5. Definitions

5.1 Special educational needs

A pupil has SEN if they have a learning difficulty or disability that requires special educational provision to be made for them.

They have a **learning difficulty or disability** if they have:

- A significantly greater difficulty in learning than most others of the same age, or
- A disability which prevents or hinders them from making use of facilities of a kind generally provided for others of the same age in mainstream schools.

Special educational provision is educational or training provision that is additional to, or different from, that made generally for other children or young people of the same age by mainstream schools.

5.2 Disability

Pupils are considered to have a **disability** if they have a physical or mental impairment that has a substantial and long-term adverse effect on their ability to do normal daily activities.

The school will make reasonable adjustments for pupils with disabilities, so that they are not at a substantial disadvantage compared with their peers.

5.3 The 4 areas of need

The needs of pupils with SEND are grouped into 4 broad areas. Pupils can have needs that cut across more than 1 area, and their needs may change over time.

Interventions will be selected that are appropriate for the pupil's particular area(s) of need, at the relevant time.

AREA OF NEED	
Communication and interaction	<p>Pupils with needs in this area have difficulty communicating with others. They may have difficulty understanding what is being said to them, have trouble expressing themselves, or do not understand or use the social rules of communication.</p> <p>Pupils who are on the autism spectrum often have needs that fall in this category.</p>
Cognition and learning	<p>Pupils with learning difficulties usually learn at a slower pace than their peers. A wide range of needs are grouped in this area, including:</p> <ul style="list-style-type: none">• Specific learning difficulties, which impact 1 or more specific aspects of learning, such as: dyslexia, dyscalculia and dyspraxia• Moderate learning difficulties• Severe learning difficulties• Profound and multiple learning difficulties, which is where pupils are likely to have severe and complex learning difficulties as well as a physical disability or sensory impairment

AREA OF NEED	
Social, emotional and mental health	<p>These needs may reflect a wide range of underlying difficulties or disorders. Pupils may have:</p> <ul style="list-style-type: none"> • Mental health difficulties such as anxiety, depression or an eating disorder • Attention deficit disorder, attention deficit hyperactive disorder or attachment disorder • Suffered adverse childhood experiences <p>These needs can manifest in many ways, for example as challenging, disruptive or disturbing behaviour, or by the pupil becoming withdrawn or isolated.</p>
Sensory and/or physical	<p>Pupils with these needs have a disability that hinders them from accessing the educational facilities generally provided.</p> <p>Pupils may have:</p> <ul style="list-style-type: none"> • A sensory impairment such as vision impairment, hearing impairment or multi-sensory impairment • A physical impairment <p>These pupils may need ongoing additional support and equipment to access all the opportunities available to their peers.</p>

6. Roles and responsibilities

6.1 The SENDCO

The SENDCO at our school is Myranda Devonish. She can be contacted by emailing **send@newfield.brent.sch.uk**.

They will:

- Inform any parents that their child may have SEND and then liaise with them about the pupil's needs and any provision made
- Work with the headteacher and SEND governor to determine the strategic development of the SEND policy and provision in the school
- Have day-to-day responsibility for the operation of this SEND policy and the co-ordination of specific provision made to support individual pupils with SEND, including those who have EHC plans
- Provide professional guidance to colleagues and liaise and work with staff, parents, and other agencies to make sure that pupils with SEND receive appropriate support and high-quality teaching
- Advise on the graduated approach to providing SEND support and differentiated teaching methods appropriate for individual pupils
- Advise on the deployment of the school's delegated budget and other resources to meet pupils' needs effectively
- Be a point of contact for external agencies, especially the local authority (LA) and its support services, and work with external agencies to ensure that appropriate provision is provided
- Liaise with potential next providers of education to make sure that the pupil and their parents are informed about options and that a smooth transition is planned

- When a pupil moves to a different school or institution: Make sure that all relevant information about a pupil's SEND and the provision for them are sent to the appropriate authority, school or institution in a timely manner
- Work with the headteacher and school governors to make sure the school meets its responsibilities under the Equality Act 2010 with regard to reasonable adjustments and access arrangements
- Make sure the school keeps its records of all pupils with SEND up to date and accurate
- With the headteacher, monitor to identify any staff who have specific training needs regarding SEN, and incorporate this into the school's plan for continuous professional development
- With the headteacher, regularly review and evaluate the breadth and impact of the SEND support the school offers or can access, and co-operate with the LA in reviewing the provision that is available locally and in developing the local offer
- Prepare and review information for inclusion in the school's SEND information report and any updates to this policy
- With the headteacher and teaching staff, identify any patterns in the school's identification of SEND, both within the school and in comparison with national data, and use these to reflect on and reinforce the quality of teaching

6.2 The governing board

The governing board is responsible for making sure the following duties are carried out, though the duties can be delegated to a committee or an individual:

- Co-operate with the LA in reviewing the provision that is available locally and developing the local offer
- Do all it can to make sure that every pupil with SEND gets the support they need
- Make sure that pupils with SEND engage in the activities of the school alongside pupils who don't have SEND
- Inform parents when the school is making special educational provision for their child
- Make sure that the school has arrangements in place to support any pupils with medical conditions
- Provide access to a broad and balanced curriculum
- Have a clear approach to identifying and responding to SEND
- Provide an annual report for parents on their child's progress
- Record accurately and keep up to date the provision made for pupils with SEND
- Publish information on the school website about how the school is implementing its SEND policy, in a SEND information report
- Publish information about the arrangements for the admission of disabled children, the steps taken to prevent disabled children being treated less favourably than others, the facilities provided to assist access of disabled children, and the school's accessibility plans
- Make sure that there is a qualified teacher designated as SENDCO for the school and that the key responsibilities of the role are set out, and monitor the effectiveness of how these are carried out
- Determine their approach to using their resources to support the progress of pupils with SEND

6.3 The SEND link governor

The SEND link governor is [insert name and contact details].

The SEND governor will:

- Help to raise awareness of SEND issues at governing board meetings

- Monitor the quality and effectiveness of SEND provision within the school and update the governing board on this
- Work with the headteacher and SENDCO to determine the strategic development of the SEND policy and provision in the school

6.4 The headteacher

The headteacher will:

- Work with the SENDCO and SEND link governor to determine the strategic development of the SEND policy and provision within the school
- Work with the SENDCO and school governors to make sure the school meets its responsibilities under the Equality Act 2010 with regard to reasonable adjustments and access arrangements
- Have overall responsibility for, and awareness of, the provision for pupils with SEND, and their progress
- Have responsibility for monitoring the school's notional SEND budget and any additional funding allocated by the LA to support individual pupils
- Make sure that the SENDCO has enough time to carry out their duties
- Have an overview of the needs of the current cohort of pupils on the SEND register
- Advise the LA when a pupil needs an EHC needs assessment, or when an EHC plan needs an early review
- With the SENDCO, monitor to identify any staff who have specific training needs regarding SEND, and incorporate this into the school's plan for continuous professional development
- With the SENDCO, regularly review and evaluate the breadth and impact of the SEND support the school offers or can access, and co-operate with the LA in reviewing the provision that is available locally and in developing the local offer
- With the SENDCO and teaching staff, identify any patterns in the school's identification of SEND, both within the school and in comparison with national data, and use these to reflect on and reinforce the quality of teaching

6.5 Class teachers

Each class teacher is responsible for:

- Planning and providing high-quality teaching that is differentiated to meet pupil needs through a graduated approach
- The progress and development of every pupil in their class
- Working closely with any teaching assistants or specialist staff to plan and assess the impact of support and interventions, and consider how they can be linked to classroom teaching
- Working with the SENDCO to review each pupil's progress and development, and decide on any changes to provision
- Ensuring they follow this SEND policy and the SEND information report
- Communicating with parents regularly to:
 - Set clear outcomes and review progress towards them
 - Discuss the activities and support that will help achieve the set outcomes
 - Identify the responsibilities of the parent, the pupil and the school
 - Listen to the parents' concerns and agree their aspirations for the pupil

6.6 Parents or carers

Parents or carers should inform the school if they have any concerns about their child's progress or development.

Parents or carers of a pupil on the SEND register will always be given the opportunity to provide information and express their views about the pupil's SEND and the support provided. They will be invited to participate in discussions and decisions about this support. They will be:

- Invited to meetings to review the provision that is in place for their child
- Asked to provide information about the impact of SEND support outside school and any changes in the pupil's needs
- Given the opportunity to share their concerns and, with school staff, agree their aspirations for the pupil
- Given a report on the pupil's progress

The school will work collaboratively with the parent or carer in any decisions made about the pupil.

6.7 The pupil

Pupils will always be given the opportunity to provide information and express their views about their SEND and the support provided. They will be invited to participate in discussions and decisions about this support. This might involve the pupil:

- Explaining what their strengths and difficulties are
- Contributing to setting targets or outcomes
- Attending review meetings
- Giving feedback on the effectiveness of interventions

The pupil's views will be considered in making decisions that affect them, whenever possible.

7. SEND information report

The school publishes a SEND information report on its website, which sets out how this policy is implemented in the school.

The information report will be updated annually and as soon as possible after any changes to the information it contains.

8. Our approach to SEND support

8.1 Identifying pupils with SEND and assessing their needs

We will assess each pupil's current skills and levels of attainment when they start at the school. This will build on information from previous settings and Key Stages, where appropriate. We will also consider any evidence that the pupil may have a disability and if so, what reasonable adjustments the school may need to make.

Class teachers will regularly assess the progress of all pupils and identify any whose progress:

- Is significantly slower than that of their peers starting from the same baseline
- Fails to match or better their previous rate of progress
- Fails to close the attainment gap between them and their peers
- Widens the attainment gap

This may include progress in areas other than attainment, for example, wider development or social needs.

When teachers identify an area where a pupil is making slow progress, they will target the pupil's area of weakness with differentiated, high-quality teaching. If progress does not improve, the teacher will raise the issue with the SENDCO to have an initial discussion about whether this lack of progress may be due to a

special educational need. Where necessary they will, in consultation with the pupil's parents or carers, consider consulting an external specialist.

Slow progress and low attainment will not automatically mean a pupil is recorded as having SEND.

Potential short-term causes of impact on behaviour or performance will be considered, such as bullying or bereavement. Staff will also take particular care in identifying and assessing SEND for pupils whose first language is not English.

When deciding whether the pupil needs special educational provision, we will start with the desired outcomes, including the expected progress and attainment, and the views and the wishes of the pupil and their parents. We will use this to determine the support that is needed and whether we can provide it by adapting our core offer, or whether something different or additional is needed.

If a pupil is joining the school, and:

- Their previous setting has already identified that they have SEND
- They are known to external agencies
- They have an education, health and care plan (EHCP)

then the school will work in a multi-agency way to make sure we get relevant information before the pupil starts at school, so support can be put in place as early as possible.

8.2 Consulting and involving pupils and parents

The school will put the pupil and their parents at the heart of all decisions made about special educational provision.

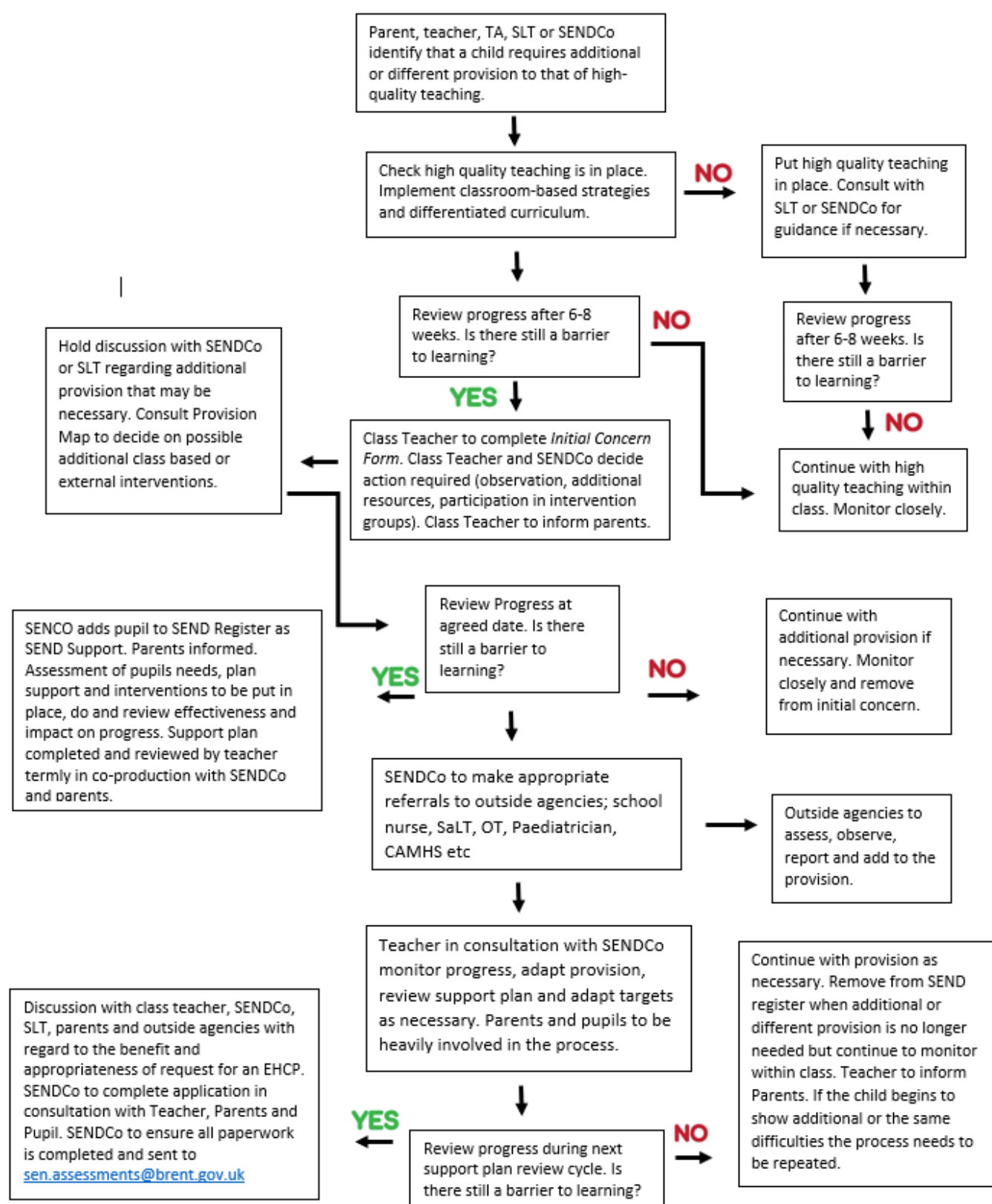
When we are aiming to identify whether a pupil needs special education provision, we will have an early discussion with the pupil and their parents. These conversations will make sure that:

- Everyone develops a good understanding of the pupil's areas of strength and difficulty
- We take into account any concerns the parents have
- Everyone understands the agreed outcomes sought for the child
- Everyone is clear on what the next steps are

Notes of these early discussions will be added to the pupil's record and given to their parents.

We will formally notify parents if it is decided that a pupil will receive special educational provision.

Identifying pupils with SEND and assessing their needs



8.3 The graduated approach to SEND support

Once a pupil has been identified as having SEND, we will act to remove any barriers to learning, and put effective special educational provision in place. This support will be delivered through successive rounds of a 4-part cycle known as the graduated approach.

1. Assess

The pupil's class teacher and the SENDCO will carry out a clear analysis of the pupil's needs. The views of the pupil and their parents will be considered. The school may also seek advice from external support services.

The assessment will be reviewed regularly to help make sure that the support in place is matched to the pupil's need. For many pupils, the most reliable way to identify needs is to observe the way they respond to an intervention.

2. Plan

In consultation with the parents and the pupil, the teacher and the SENDCO will decide which adjustments, interventions and support will be put into place, the expected outcomes, and a clear date for review.

All staff who work with the pupil will be made aware of the pupil's needs, the outcomes sought, the support provided and any teaching strategies or approaches that are needed. This information will be recorded on our management information system, Edukey, and will be made accessible to staff in a pen portrait or school-based support plan.

Parents will be fully aware of the planned support and interventions, and may be asked to reinforce or contribute to progress at home.

3. Do

The pupil's class or subject teacher retains overall responsibility for their progress.

Where the plan involves group or 1-to-1 teaching away from the main class or subject teacher, they still retain responsibility for the pupil. They will work closely with any teaching assistants or specialist staff involved, to plan and assess the impact of support and interventions and how they can be linked to classroom teaching.

The SENDCO will support the teacher in further assessing the pupil's particular strengths and weaknesses, in problem solving and advising on how to implement support effectively.

4. Review

The effectiveness of the support and interventions and their impact on the pupil's progress will be reviewed in line with the agreed date.

We will evaluate the impact and quality of the support and interventions. This evaluation will be based on:

- The views of the parents and pupils
- The level of progress the pupil has made towards their outcomes
- The views of teaching staff who work with the pupil

The teacher and the SENDCO will revise the outcomes and support in light of the pupil's progress and development, and in consultation with the pupil and their parents.



8.4 Levels of support

School-based SEND provision

Pupils receiving SEND provision will be placed on the school's SEND register. These pupils have needs that can be met by the school through the graduated approach. Where the pupil's needs cannot be adequately met with in-house expertise, staff will consider involving an external specialist as soon as possible.

The provision for these pupils is funded through the school's notional SEND budget.

On the census these pupils will be marked with the code K.

Education, health and care (EHC) plan

Pupils who need more support than is available through the school's school-based SEN provision may be entitled to an EHC plan. The plan is a legal document that describes the needs of the pupil, the provision that will be put in place, and the outcomes sought.

The provision for these pupils will be funded from the school's notional SEND budget, and potentially from the LA (from the high-level needs funding block of the dedicated schools grant).

On the census these pupils will be marked with the code E.

Provision on Offer at Newfield

Specialist	<ul style="list-style-type: none"> • EHCP • Additional specialist provision
Targeted	<ul style="list-style-type: none"> • Speech and language therapy • Colourful Semantics • Counselling / Art therapy • Lego therapy • Occupational therapy • STAT programme • BVIS (Brent Visual Impairment Service) • BDHIS Brent Deaf and Hearing Impaired Service • Play buddy/ structured play • Social inclusion groups • Emotional regulation (Zones of Regulation) • Adapted curriculum • Laptops • Daily Supported Reading • Now, next and then timetable • Mental Health Support Team • West London Zone • Precision Teaching • Barrington Stoke Dictionary • ELSA • Cubbie • Rhythm and Wellbeing • Thrive • Reading overlays • Dyslexia pen reader
Universal	<ul style="list-style-type: none"> • A strong focus on the importance of positive relationships • 6Bs (Brain, board, box, buddy, book, boss) • Anticipatory reasonable adjustments • School nurse • Emotional regulation (My Happy Mind/ Zones of Regulation) • Well-organised classroom with labelled resources/ picture symbols • Displays which support learning e.g. word lists, and multiplication grids • Assessment of prior learning that supports the planning of learning objectives for all pupils • Clear lesson structures with learning objectives presented orally and visually • Instructions given in small chunks with visual cues • Understanding checked • Pupils being clear about what is expected of them e.g. use of 'What a Good One Looks Like' (WAGOLL) • Understanding demonstrated in a variety of ways e.g. verbal explanations, drawings and diagrams, videos • A range of groupings within the class including some random pairing activities • Periods of listening broken up with practical activity • Sports Coaches • Daily Mile • Activities chunked into manageable tasks with the use of scaffolds and prompts • Visual Timetables in every class • Positive behaviour system • Clear school values • Worry Boxes • Reflection Zones • Neutral backing and plain lettering designs for displays • Matt laminate to reduce glare

8.5 Evaluating the effectiveness of SEND provision

We evaluate the effectiveness of provision for pupils with SEND by:

- Tracking pupils' progress, including by using provision maps
- Carrying out the review stage of the graduated approach in every cycle of SEND support
- Using pupil questionnaires
- Monitoring by the SENDCO
- Holding annual reviews for pupils with EHC plans
- Getting feedback from the pupil and their parents

9. Expertise and training of staff

Training will regularly be provided to teaching and support staff. The headteacher and the SENDCO will continuously monitor to identify any staff who have specific training needs and will incorporate this into the school's plan for continuous professional development.

Our SENDCO has been in role for the past two years. She has over 10 years teaching experience and is also a SEND Link Governor for a local school. Our SENDCO is allocated 3 days a week to manage SEND provision.

We have a team of 17 teaching assistants and one HLTA who are trained to deliver SEND provision.

We use specialist staff for counselling, speech and language and occupational therapy.

10. Links with external professional agencies

The school recognises that it won't be able to meet all the needs of every pupil. Whenever necessary the school will work with external support services such as:

- Speech and language therapists
- Specialist teachers or support services
- Educational psychologists
- Occupational therapists, or physiotherapists
- General practitioners or pediatricians
- School nurses
- Child and adolescent mental health services (CAMHS)
- Education Welfare Officers
- Social Care and Early Help services
- Brent Outreach Autism Team
- Brent Inclusion Team
- Rise Partnership
- STAR (Supporting the Assessment Route)
- Great Ormond Street Hospital
- Visual Impairment Team

- Mental Health Support Team
- The Wellbeing and Emotional Support Team
- NSPCC

11. Admission and accessibility arrangements

We have taken several steps to prevent disabled pupils from being treated less favorably than other pupils.

For more information please refer to our accessibility plan [here](#).

11.1 Admission arrangements

The Governing Body believes that admissions criteria should not discriminate against pupils with SEND, and has due regard for the general presumption in law of mainstream education for children with SEND, secured by the Children and Families Act 2014 and referred to within the new SEND Code of Practice, in that:

“Where a child Has SEND but does not have an EHC Plan they must be educated in a mainstream setting except under specific circumstances” CoP 1:27

Where a child has a particular need, e.g. wheelchair access, the governors will make every effort to ensure the child’s needs are fully met.

The school provides access for physically disabled pupils, staff and parents, by means of special toilet facilities and ramps.

If a child is transferring into the school with an Educational Health Care Plan (EHCP), the continuation of this support will be negotiated with the Local Authority to ensure their needs can be met (See Accessibility Plan).

Applications for children with an Education, Health and Care Plan (EHCP) are made by Local Authority SEND teams. The placement of such children is made after a process of consultation between parents, the school and the Local Authority. Children with an EHCP receive priority over others for admission to the school named on their EHCP. An EHCP is a plan made by the Local Authority under Section 37 of the Children and Families Act 2014 specifying the special education provision required for that child.

As pupils on the SEND Register progress to secondary school the SENDCO and class teacher will liaise with the various receiving schools. This will include inviting the SENDCO from the Secondary schools to Year 6 Annual Reviews and arrange visits for pupils and parents to look at prospective schools. This will include specialist provision in the case of some pupils with EHCPs.

If it is known that a child due to join our school has SEND needs, the SENDCO will contact the current setting and arrange a transition meeting to observe and meet the child and parents in order to obtain important information about the child’s needs where possible.

11.2 Accessibility arrangements

The whole school Accessibility Plan is monitored regularly and contains relevant and timely actions to:

- Increase access to the curriculum for pupils with a physical disability and/or sensory impairments
- Expand the curriculum as necessary to ensure that pupils with a disability are as equally prepared for life as those who do not. It covers teaching and learning and the wider curriculum of the school such as participation in after-school clubs, leisure and cultural activities or schools visits. It also covers the provision of specialist or auxiliary aids and equipment, which may assist these pupils in accessing the curriculum within a reasonable timeframe;

- Improve and maintain access to the physical environment of the school, adding specialist facilities as necessary – this covers improvements to the physical environment of the school and physical aids to access education within a reasonable timeframe
- Improve the delivery of written information to pupils, staff, parents and visitors with disabilities; examples might include hand-outs, timetables, textbooks and information about the school and school events; the information should be made available in various preferred formats within a reasonable timeframe.

12. Complaints about SEND provision

If you wish to discuss your child's special educational needs or are unhappy about any issues regarding the school's response to meeting these needs please contact your child's class teacher, the SENDCO or the Headteacher.

Complaints about SEND provision in our school should be made to the class teacher in the first instance. They will then be referred to the Headteacher if necessary.

If the parent or carer is not satisfied with the school's response, they can escalate the complaint by following the school's Complaints Policy.

To see a full explanation of suitable avenues for complaint, see pages 246 and 247 of the [SEN Code of Practice](#).

To find out about disagreement resolution and mediation services in our local area contact [SENDIASS | Brent Council](#).

13. Monitoring and evaluation arrangements

13.1 Evaluating the effectiveness of the policy

We are constantly looking for ways to improve our SEND policy. We will do this by evaluating whether or not we are meeting our objectives set out in section 1.

We will evaluate how effective our SEND provision is with regards to:

- All staff's awareness of pupils with SEND at the start of the autumn term
- How early pupils are identified as having SEND
- Pupils' progress and attainment once they have been identified as having SEND
- Whether pupils with SEND feel safe, valued and included in the school community
- Comments and feedback from pupils and their parents

13.2 Monitoring the policy

This policy will be reviewed by Myranda Devonish every year. It will also be updated when any new legislation, requirements or changes in procedure occur during the year.

It will be approved by the full governing board.

14. Links with other policies and documents

This policy links to the following documents

- SEND information report
- The local offer
- Accessibility plan

- Behaviour for Learning policy
- Equality information and objectives
- Supporting pupils with medical conditions policy
- Attendance policy
- Safeguarding and Child protection policy
- Complaints policy

15. Glossary

- › **Access arrangements** – special arrangements to allow pupils with SEN to access assessments or exams
- › **Annual review** – an annual meeting to review the provision in a pupil's EHC plan
- › **Area of need** – the 4 areas of need describe different types of needs a pupil with SEN can have. The 4 areas are communication and interaction; cognition and learning; physical and/or sensory; and social, emotional and mental health needs
- › **CAMHS** – child and adolescent mental health services
- › **Cubbie** – An immersive multisensory space that reduces anxiety and supports emotional regulation
- › **Differentiation** – When teachers adapt how they teach in response to a pupil's needs
- › **EHC needs assessment** – the needs assessment is the first step on the way to securing an EHC plan. The local authority will do an assessment to decide whether a child needs an EHC plan
- › **EHC plan** – an education, health and care (EHC) plan is a legally-binding document that sets out a child's needs and the provision that will be put in place to meet their needs
- › **ELSA** - Emotional Literacy Support Assistance is a school-based program designed to help children and young people improve their emotional literacy and mental well-being.
- › **First-tier tribunal / SEND tribunal** – a court where you can appeal against the local authority's decisions about EHC needs assessments or plans and against discrimination by a school or local authority due to SEN
- › **Graduated approach** – an approach to providing SEN support in which the school provides support in successive cycles of assessing the pupil's needs, planning the provision, implementing the plan, and reviewing the impact of the action on the pupil
- › **Intervention** – a short-term, targeted approach to teaching a pupil with a specific outcome in mind
- › **Local offer** – information provided by the local authority that explains what services and support are on offer for pupils with SEN in the local area
- › **Outcome** – target for improvement for pupils with SEN. These targets don't necessarily have to be related to academic attainment
- › **Reasonable adjustments** – changes that the school must make to remove or reduce any disadvantages caused by a child's disability
- › **SCERTS** - a comprehensive educational framework designed to support children with Autism Spectrum Disorder (ASD) and other developmental disabilities. It focuses on **S**ocial **C**ommunication, **E**motional **R**egulation and **T**ransactional **S**upports. The SCERTS Model is based on the idea that these areas of development are interconnected, and progress in one area supports growth in others.
- › **SENCO** – the special educational needs co-ordinator

- › **SEN** – special educational needs
- › **SEND** – special educational needs and disabilities
- › **SENDCO** – the special educational needs and disabilities co-ordinator
- › **SEND Code of Practice** – the statutory guidance that schools must follow to support children with SEND
- › **SEN information report** – a report that schools must publish on their website, that explains how the school supports pupils with SEN
- › **SEN support** – special educational provision that meets the needs of pupils with SEN
- › **Thrive Approach**- a therapeutic framework used to support children's emotional and social development. It focuses on building healthy relationships, enhancing emotional resilience, and addressing unmet developmental needs.
- › **Transition** – when a pupil moves between years, phases, schools or institutions or life stages
- › **WEST** - The Wellbeing and Emotional Support Team is a support service that focuses on promoting the emotional health and well-being of children and young people. WEST provides a range of services including counseling, mental health support, and interventions to help students manage stress, anxiety, social challenges, and emotional difficulties.